



Highlights: July 2012....

Main Line Rehabilitation Associates



Western Pennsylvania Services Expanding!

We are bringing our traditions of excellent clinical service to you in **Allegheny, Armstrong, Beaver, Bulter, Erie, Fayette, Greene, Lawrence, Washington, Westmoreland, and Venango Counties!** Since 1986, Main Line Rehab Associates has been the leading home & community based program for individuals with neurological impairments. We are dedicated to the rehabilitation needs of individuals with acquired brain injury, autism, and other neurological diagnoses.

Main Line Rehabilitation provides one-on-one support, intervention, and education to help individuals carry over therapeutic skills and strategies into their everyday lives. Therapists help individuals, their families, and other natural supports to identify problem areas, learn different strategies to improve functioning, and implement skills consistently in day-to-day activities.

Across our broad spectrum of individualized community based services, our outcomes have shown that our individuals experience clinical and functional gains, improved quality of life, and satisfaction with our services.

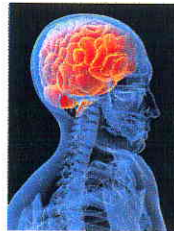
Main Line Rehabilitation Associates, Inc. is a trusted provider of Home and Community Services under the following funding options:

- Pennsylvania Head Injury Program
- PA Waivers- COMMCare, Independence, OBRA
- Office of Vocational Rehabilitation (OVR)
- Private and Third Party Insurers
- School District Funding
- Self-Pay
- Workers' Compensation



Neuro-Cognitive Specialists

Main Line Rehabilitation Associates' team of clinicians received new job titles- Neuro-Cognitive Specialists. Those formally known as Facilitators or Community Integration Specialists will now appropriately carry the title Neuro-Cognitive Specialist. This title reflects Main Line Rehabilitation Associates' true specialty in working with individuals with cognitive impairments for over 26 years. The training of our professional clinicians, now known as Neuro-Cognitive Specialists, is influenced greatly by our membership and involvement with the Society for Cognitive Rehabilitation and the Academy of Certified Brain Injury Specialists. Stay tuned for more information on this exciting update.



Rita Carroll, our president was named to the Board of Governors for the Academy of Certified Brain Injury Specialists. The mission of the Academy of Certified Brain Injury Specialists, administered by the brain Injury Association Of America, is to improve the quality of care given to individuals with brain injury through the education and training of those who work in brain injury services. The Academy offers a voluntary national certification program that establishes best practices for the training of individuals working with individuals with brain injuries. More than 80 % of Main Line's eligible staff are Certified Brain Injury Specialists.

The State Budget Cuts *Are* Affecting *All* Individuals With Disabilities In PA!

Join us in letting your voice be heard! Go to Main Line Rehab's Facebook page to sign the petition these cuts (www.facebook.com/MainLineRehab.com). Main Line Rehabilitation Associates has been working directly with the 140 individuals that we serve through the CommCare, OBREA, and Independence Waiver, their families, Service Coordinators, advocates, and state and government contacts to respond to the drastic cuts in funding for vital home and community based services. Our efforts have focuses on self-advocacy, inter-agency communication , and persevering services to individuals who need them in order to stay in their home and community. But, the existing system needs to be restored so the individuals with a unique neuro-cognitive difficulties can receive the home and community based treatment that will allow them to live independently in their own communities. Respectfully, the budget should not be balanced on the backs of those who can least afford cuts in services.

What does this mean? Funding for home and community based services to people with disabilities is being cut by \$17.4 million for FY 2012-2013. The need for fiscal restraint is understood. No one is asking for vast increase in services at a time when Pennsylvania can not afford them.

For more information, contact us at:

1-877-480-6714 or info@mainline-rehab.com

Visit us at:

www.mainline-rehab.com

CARF Accredited Home &
Community Based Brain Injury Program